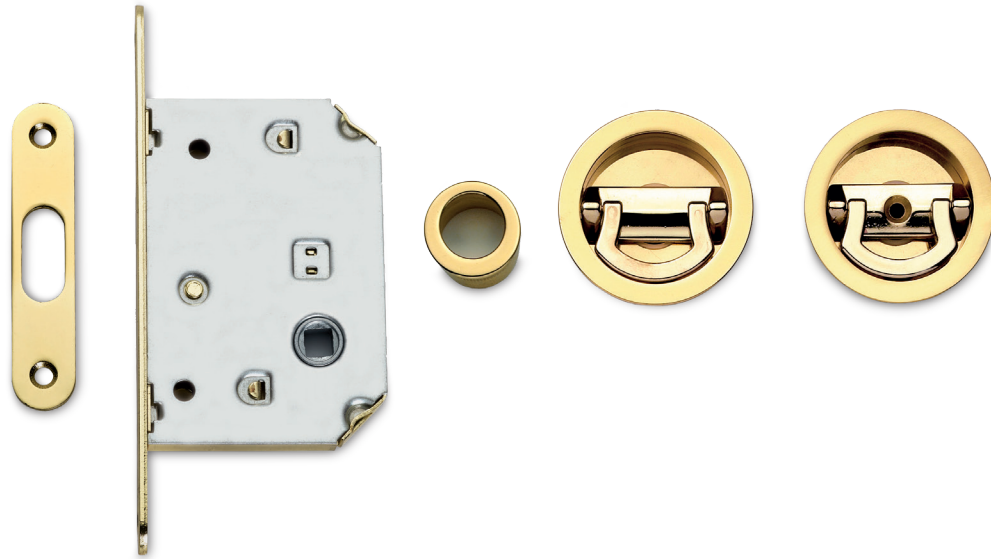
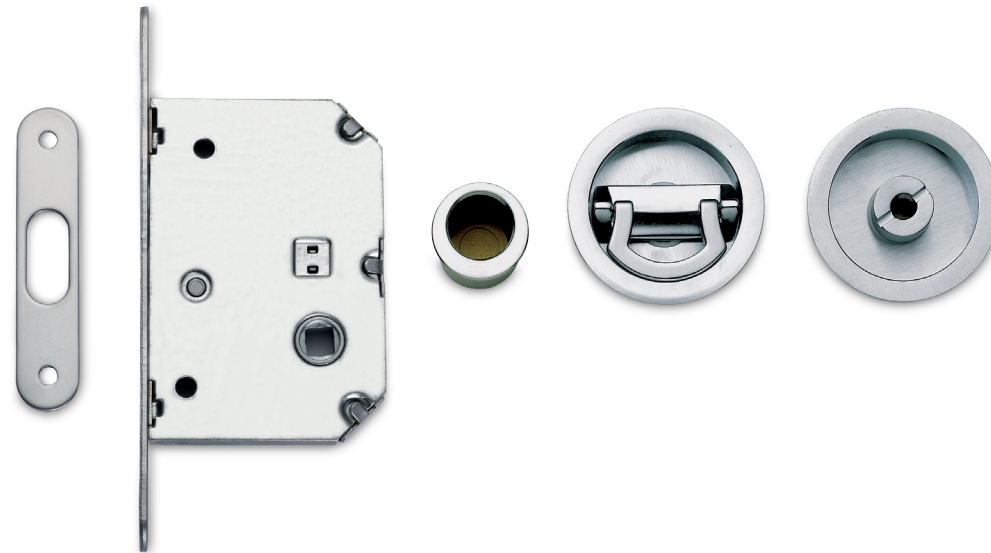


KIT 6C TONDO DOPPIO PENDENTE



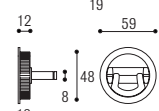
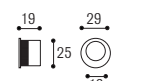
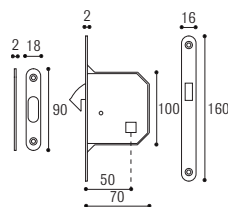
KIT 6A TONDO PENDENTE



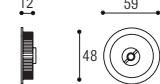
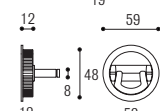
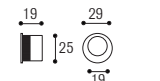
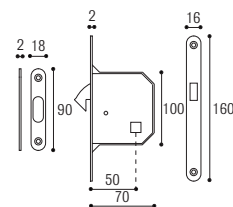
Materiale: Ottone + Zircal
Material: Brass + Zircal



Kit 6C



Kit 6A



KIT 6C doppio pendente
con serratura
*KIT 6C with double hanging
handle with lock*

Cod. 13 CS 6C
€ 65,00

Cod. 13 CL 6C
€ 65,00

Cod. 13 OL 6C
€ 54,20

Cod. 13 OG 6C
€ 54,20

Cod. 13 BA 6C
€ 65,00

KIT 6A un pendente
con serratura
*KIT 6A latch and hanging
handle with lock*

Cod. 13 CS 6A
€ 65,00

Cod. 13 CL 6A
€ 65,00

Cod. 13 OL 6A
€ 54,20

Cod. 13 OG 6A
€ 54,20

Cod. 13 BA 6A
€ 65,00

CARATTERISTICHE TECNICHE

- Facilità di montaggio con vite in testa
- Nessuna sporgenza porta
- Gancio serratura con rientro automatico in emergenza
- Ampia gamma di finiture
- Corpo serratura monoblocco pressofuso
- Corpo serratura chiusura ermetica

TECHNICAL INFORMATIONS

- Easy to assemble, with screw on top
- No projection on the door panel
- Lock hook with automatic release in case of emergency
- Various finishings available
- Die-casting monobloc lock central part
- lock central part with hermetic seal